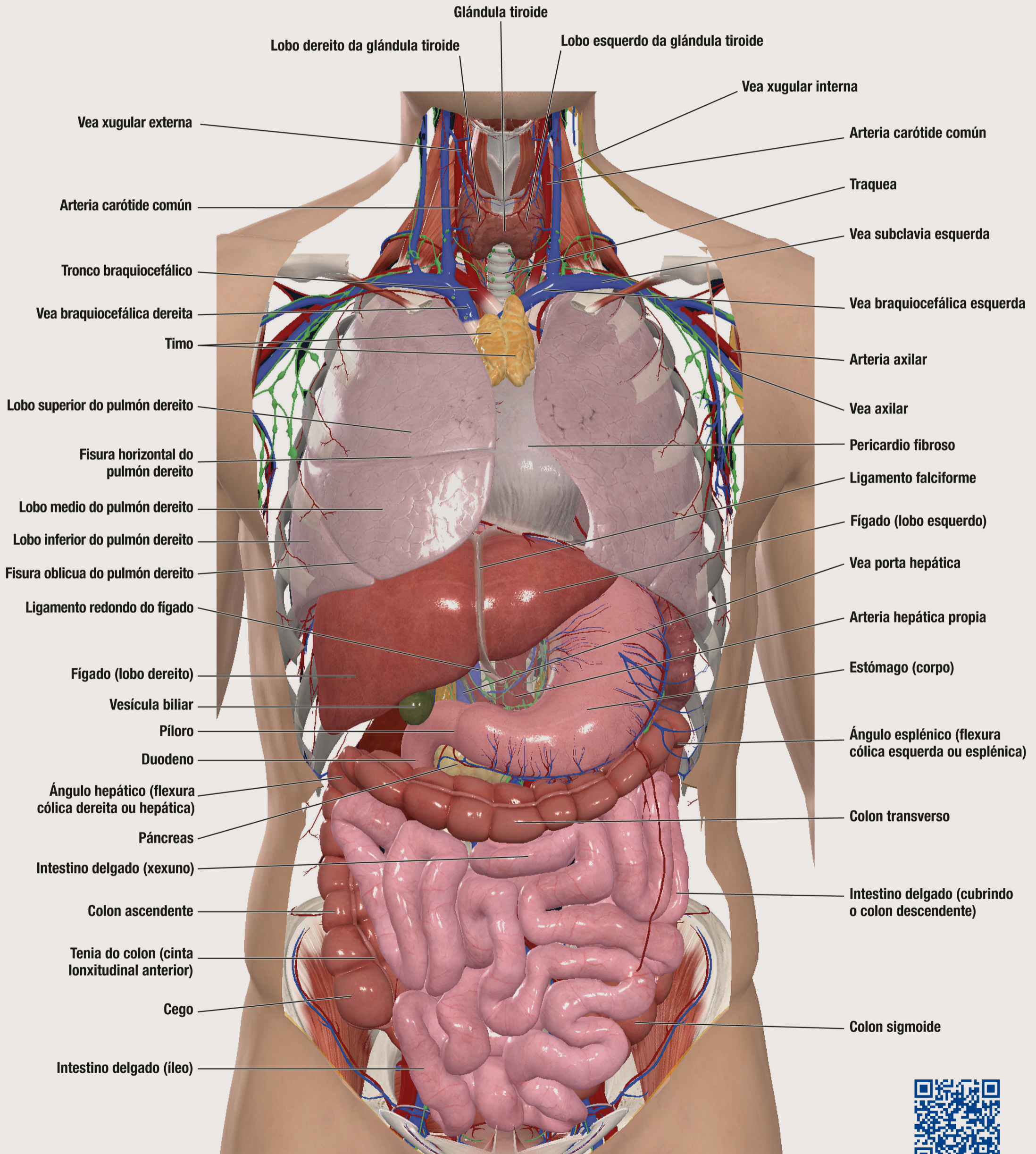
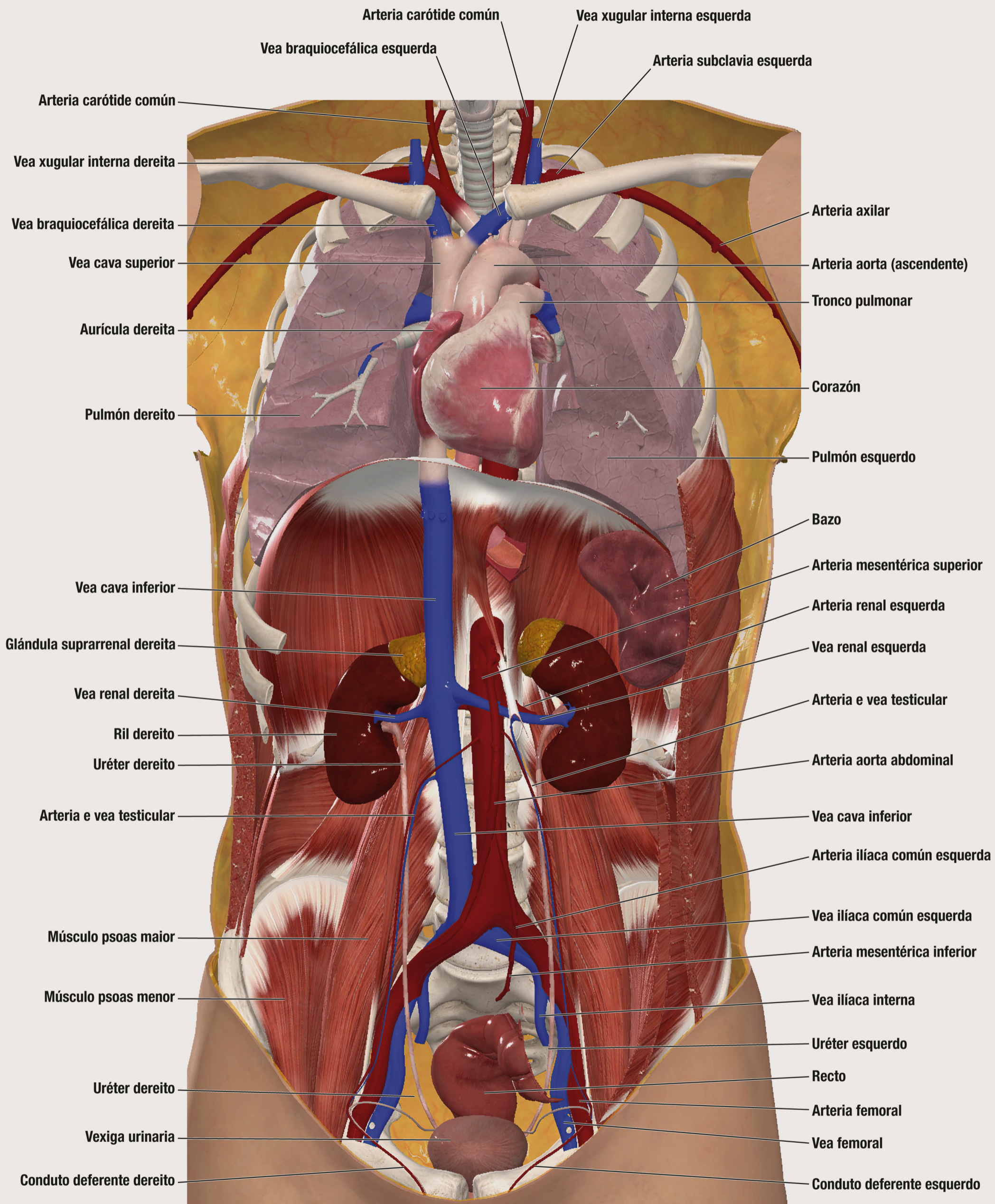


Modelo frontal con vísceras



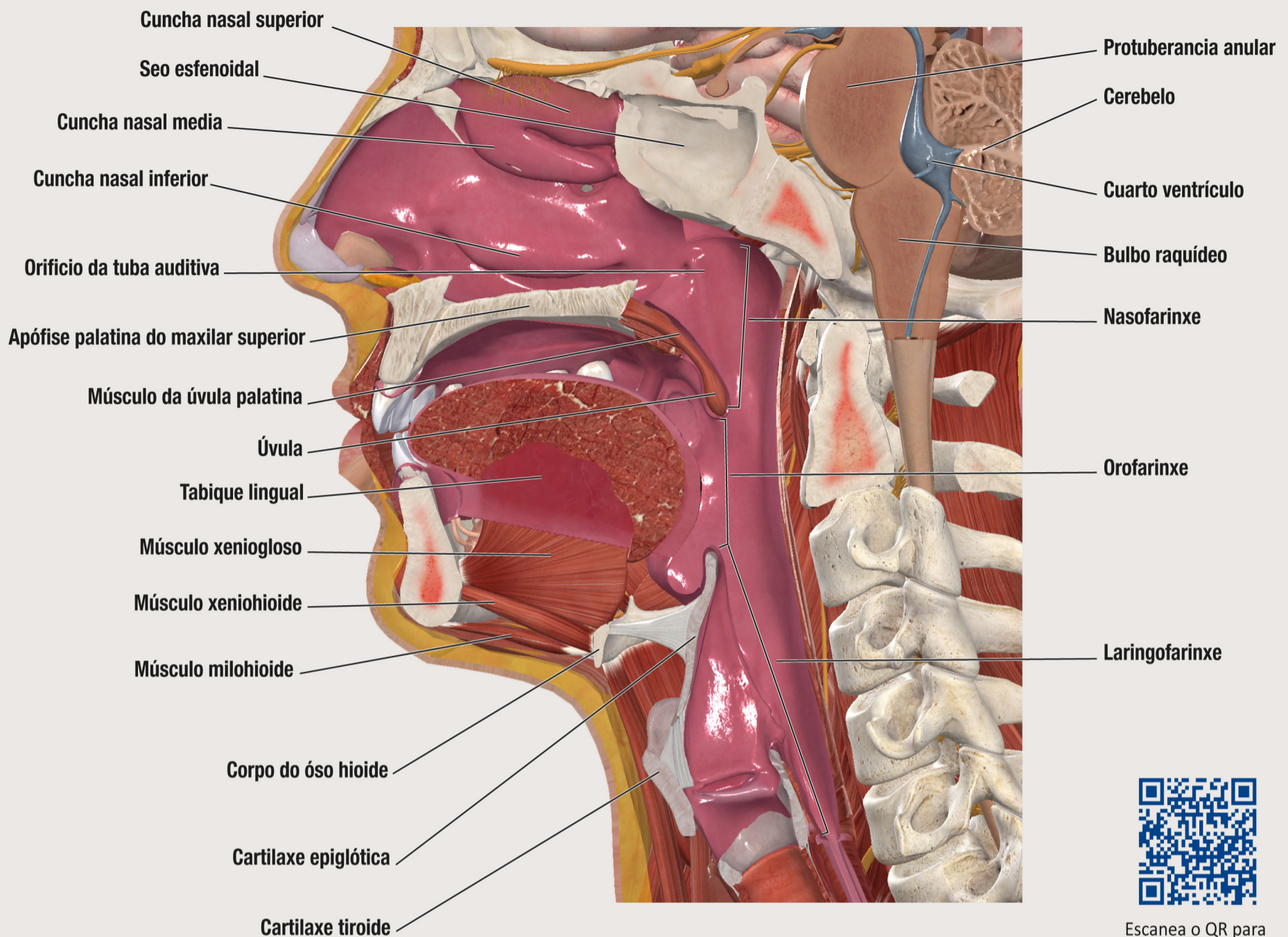
Escanea o QR para ver un vídeo en 3D

Modelo frontal con vísceras retroperitoneais



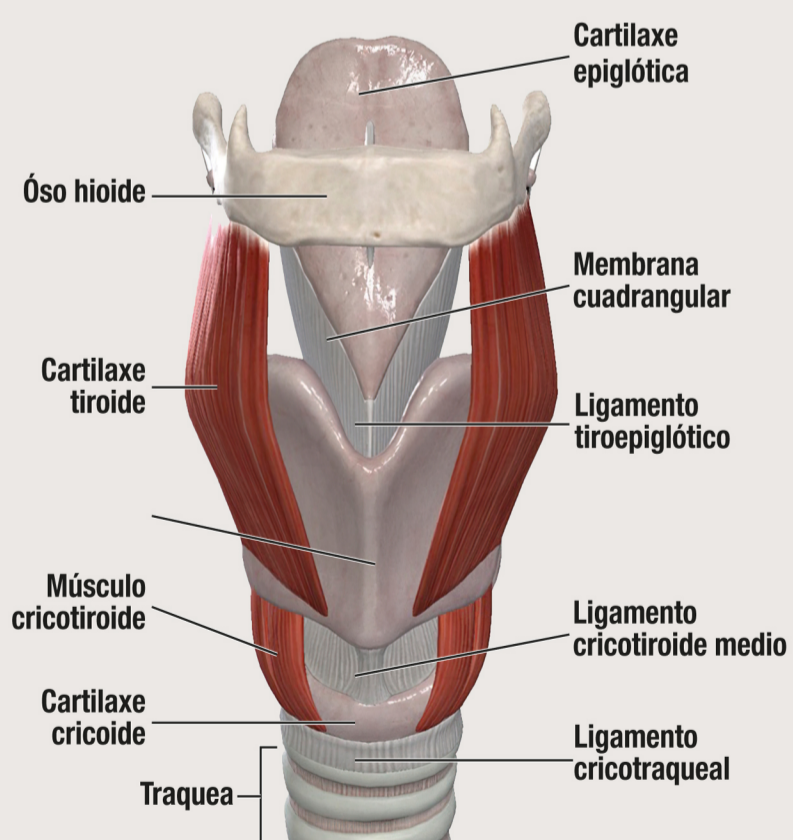
Escanea o QR para
ver un vídeo en 3D

Corte saxital medio da vía respiratoria superior



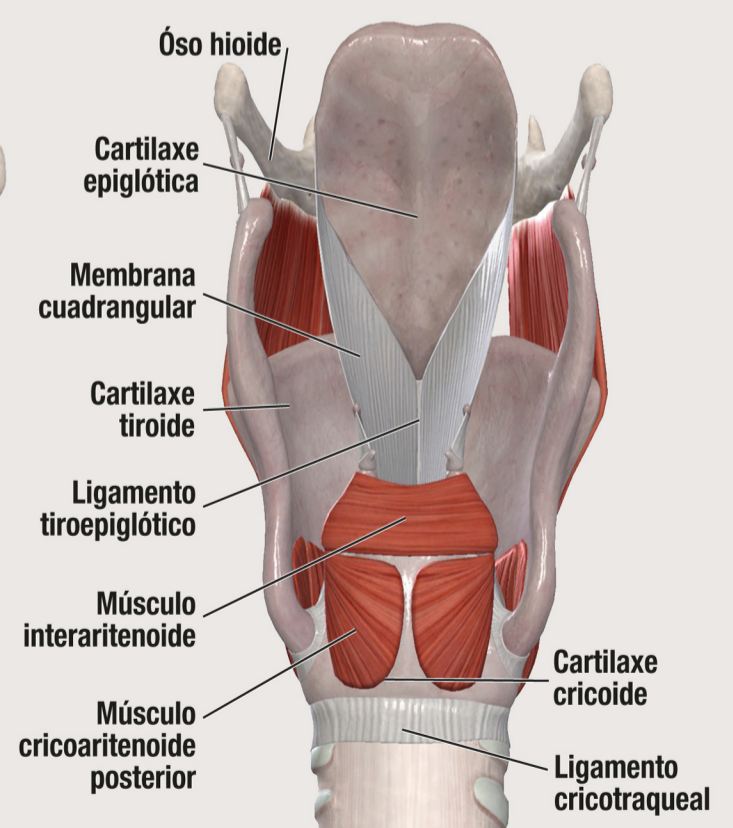
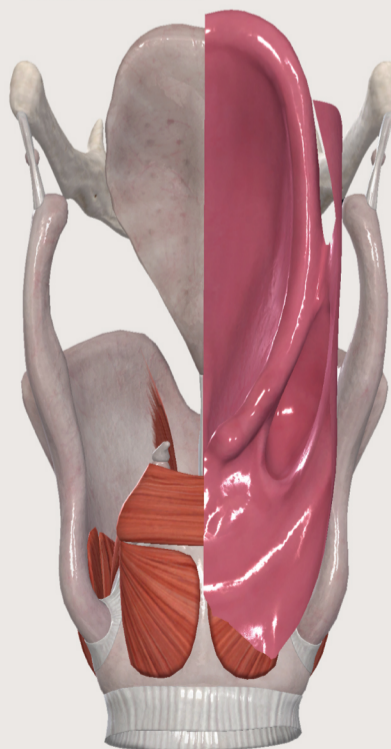
Escanea o QR para ver un vídeo en 3D

Vista anterior da larinxe



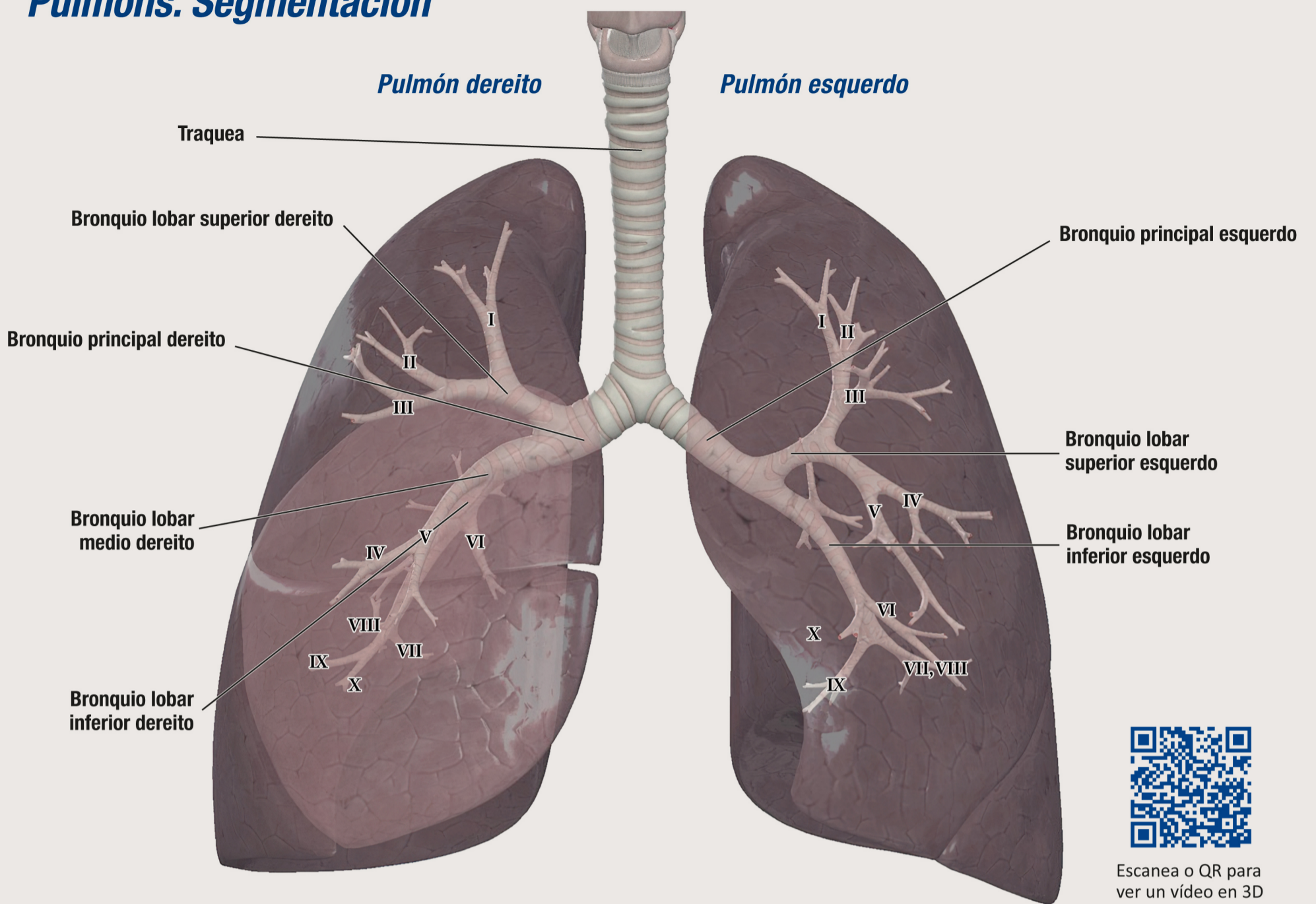
Vista posterior da larinxe

Vista posterior con mucosa

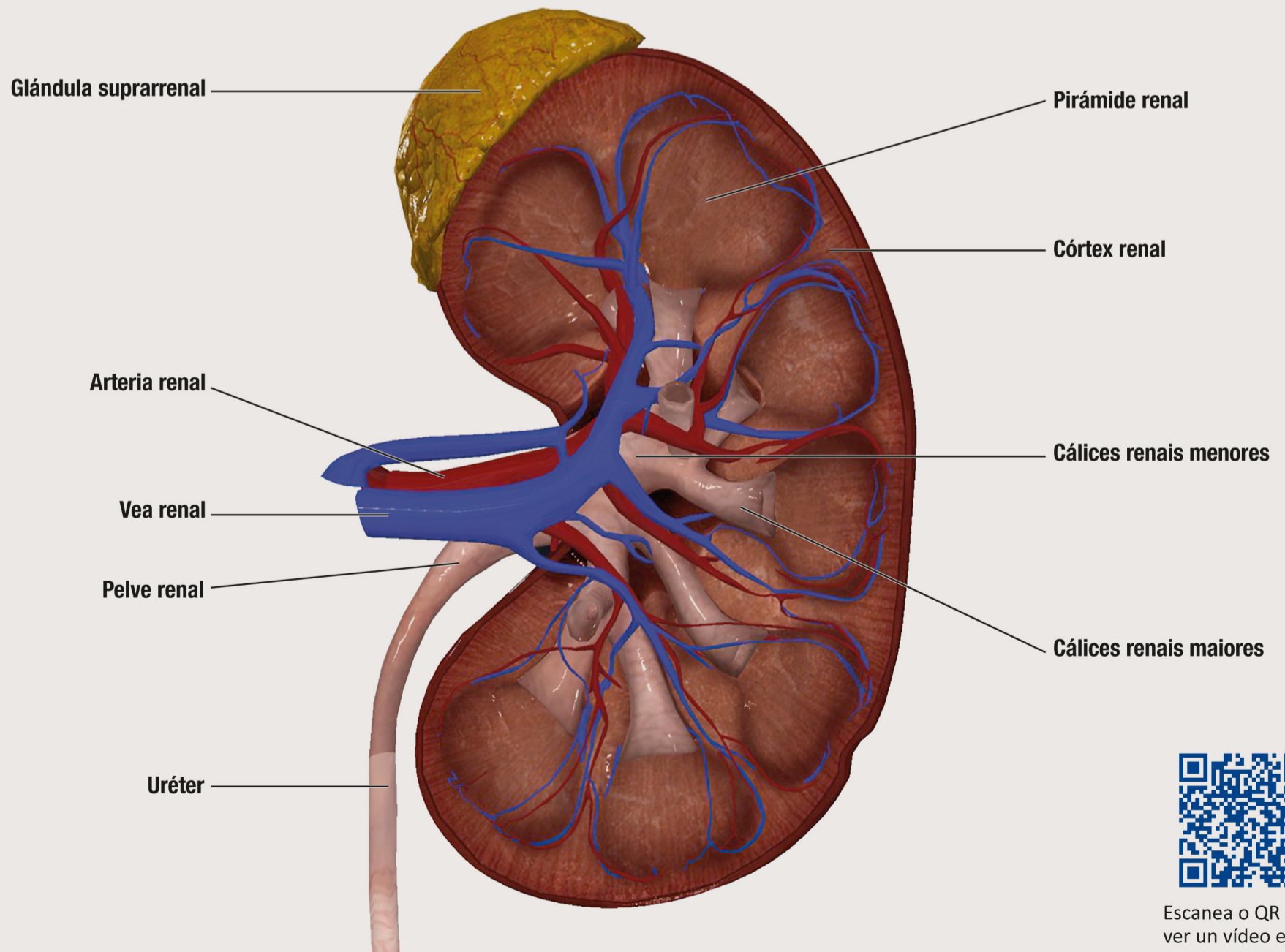


Escanea o QR para ver un vídeo en 3D

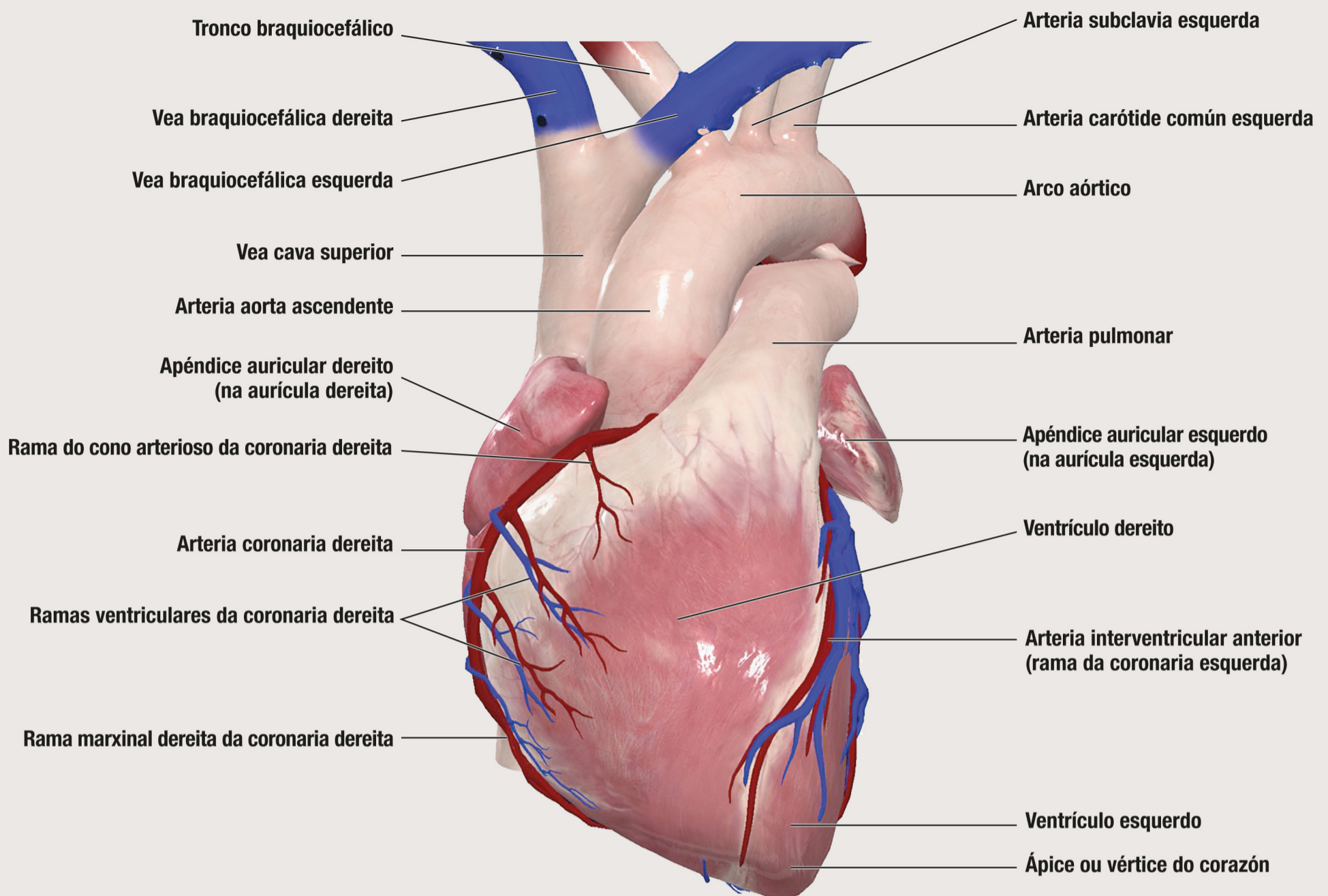
Pulmóns. Segmentación



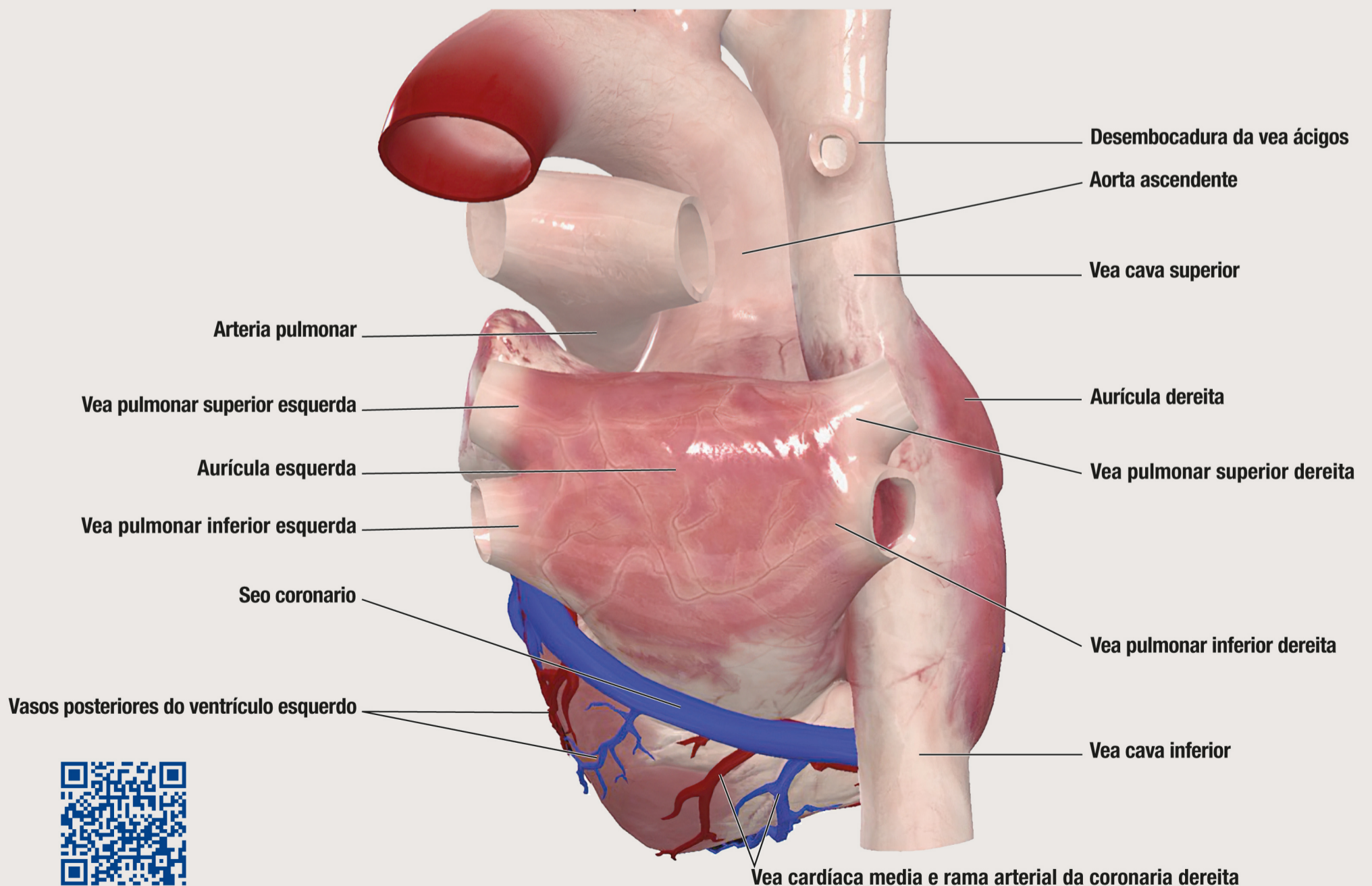
Corte coronal do ril



Vista anterior do corazón e dos grandes vasos

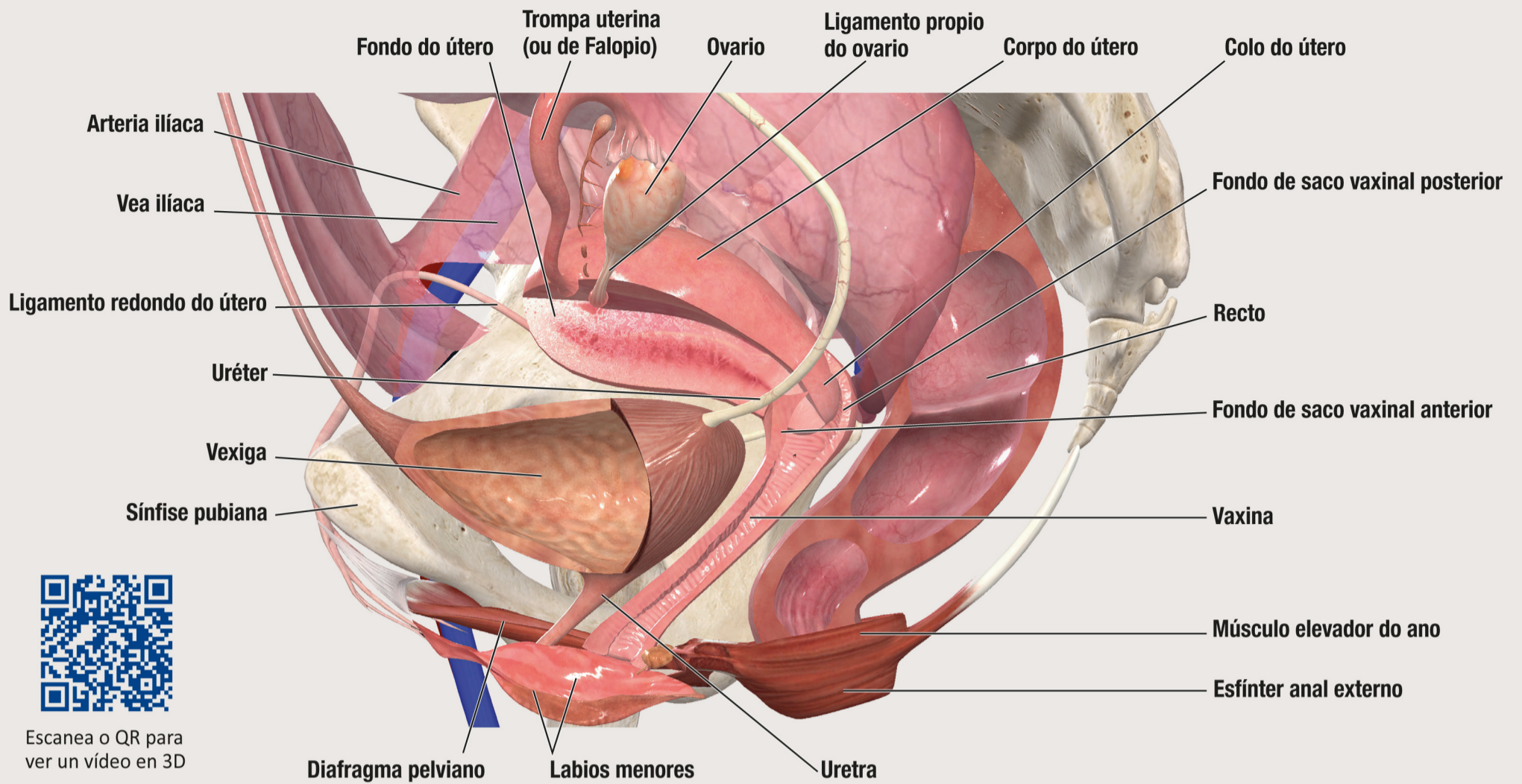


Vista posterior da base do corazón e dos grandes vasos



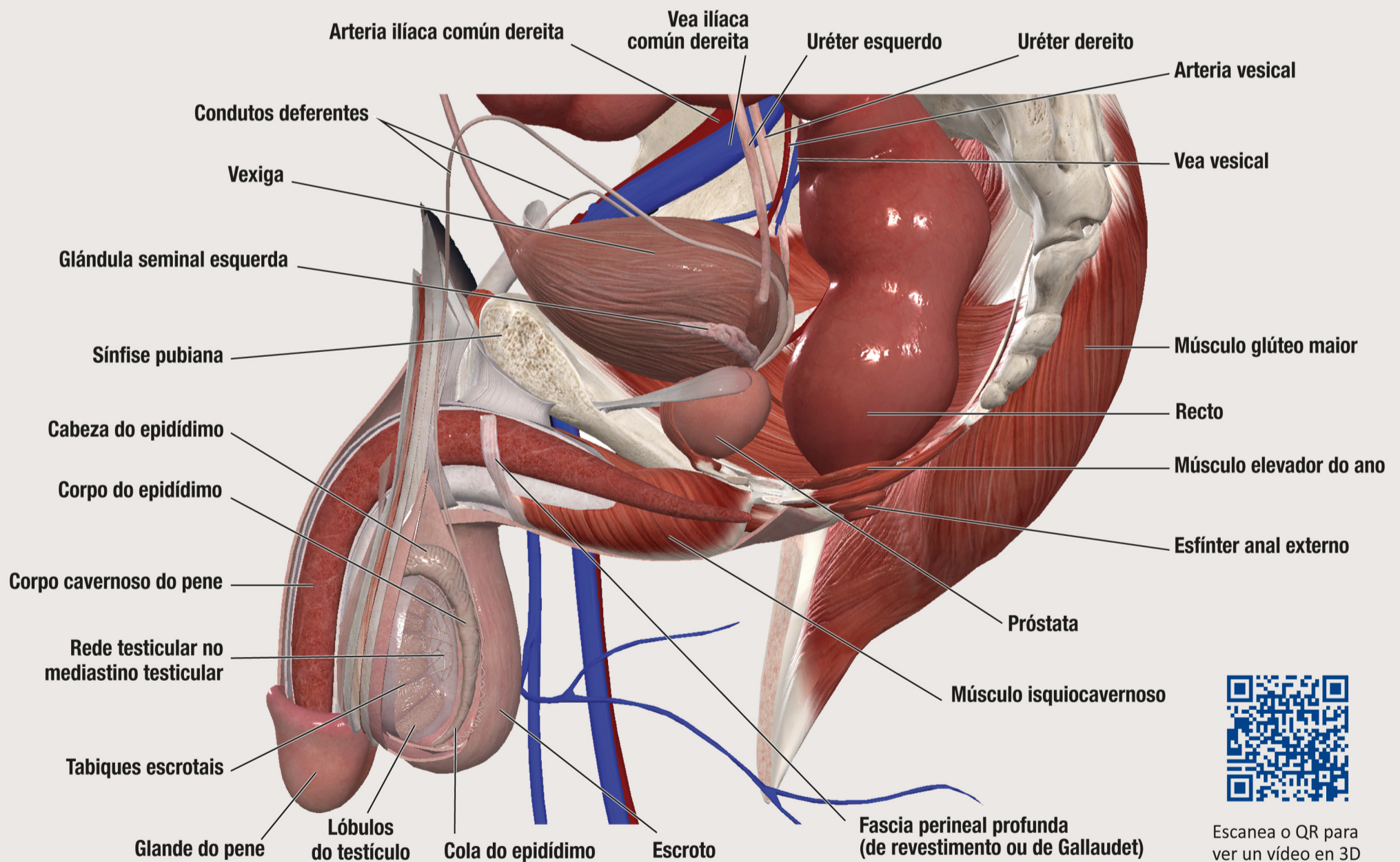
Escanea o QR para ver un vídeo en 3D

Modelo xenital feminino



Escanea o QR para ver un vídeo en 3D

Modelo xenital masculino



Escanea o QR para ver un vídeo en 3D



Consulta aquí os equivalentes noutros idiomas destes termos

bUSCatermos

www.usc.gal/buscatermos

